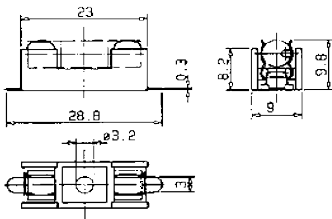


Type
199011

Type
199012


199011


SMD-Sicherungshalter für G-Sicherungseinsätze 5 x 20 mm /
Fuse-Holders (Fuse-Blocks) for miniature Fuse-Links 5 x 20 mm

Bemessungsspannung / rated voltage

AC 250 V / DC 300 V

Bemessungsstrom / rated current

6,3 A

Bemessungsleistung / rated power

1,6 W

Montage / mounting

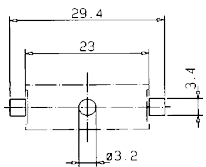
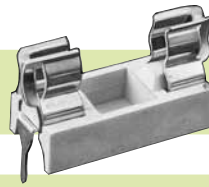
Leiterplatte / printed circuit board

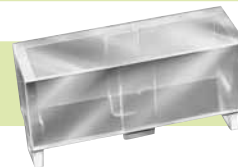
Schrauben oder Nieten / screw or rivet

Anschlüsse / connections

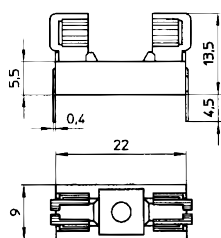
lötbar / solderable

199012


Type
199015

Type
199015A

Type
199016


199015


G-Sicherungshalter für G-Sicherungseinsätze 5 x 20 mm /
Fuse-Holders (Fuse-Blocks) for miniature Fuse-Links 5 x 20 mm

Bemessungsspannung / rated voltage

250 V

Bemessungsstrom / rated current

6,3 A (VDE), 10A (UL)

Bemessungsleistung / rated power

1,6 W

Montage / mounting

Leiterplatte / printed circuit board

Stiftabstand / pin distance

22,5 mm

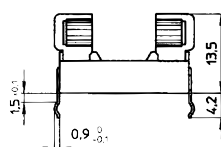
Bohrungen / hole

Ø 1,5 mm

Anschlüsse / connections

lötbar / solderable

199015A



Abdeckung / cover 199016

Thermoplast, transparent / thermoplastic, transparent

199016

